

PRODUCT CATALOGUE

Acidified Tyrode's

- For opening of zona pellucida.
- pH is adjusted to 2.5 rigorously.



REF	Code	Details	Contents
94211	TA-05×5	Acidified Tyrode's (pH2.5)	0.5mL×5

COMPONENTS

Calcium chloride / Gentamicin / Glucose /
Magnesium chloride / Polyvinylpyrrolidone /
Potassium chloride / Sodium chloride

QUALITY CONTROL

pH 2.2-2.8 / Osmolarity 270-295mOsm/L /
Endotoxin <0.25EU/mL / Sterility test /
Mouse Embryo Assay ≥80%
Storage: 2-8°C
Shelf Life: 6 months

Specification may change without pre-notice for purpose of product improvement.

Kitazato Corporation

HEADQUATER : 100-10 Yanagishima, Fuji, Shizuoka 416-0932 JAPAN

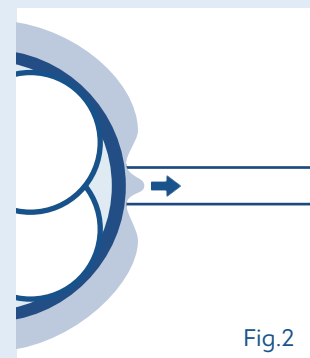
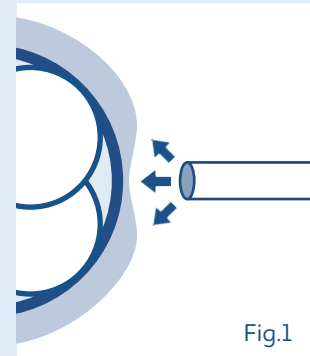
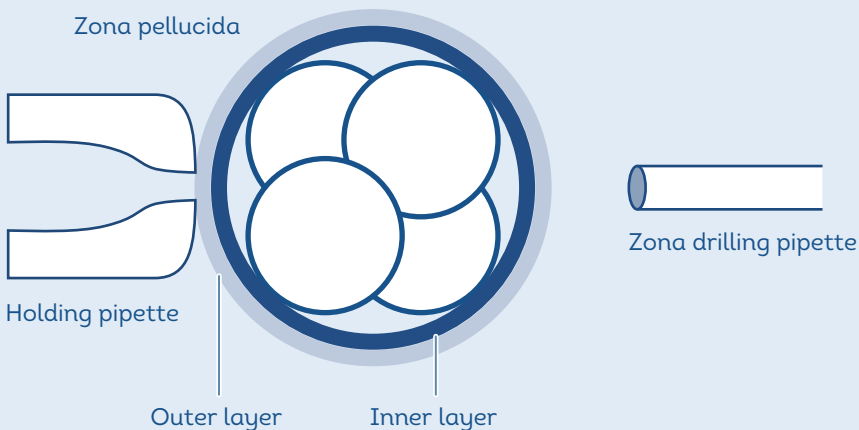
TOKYO : 1-1-8 Shibadaimon, Minato-ku, Tokyo 105-0012 JAPAN

Mail contact@kitazato.co.jp

PROTOCOL

- 01** Hold an embryo with a holding pipette.
- 02** Aspirate the Acidified Tyrode's with a zona drilling pipette.
- 03** Move the pipette closer to the embryo from 3 o'clock position. Apply the Acidified Tyrode's to the embryo in the range of 30-50 μ m (Fig.1)
- 04** Once the zona pellucida of the embryo starts to dissolve, move the micro pipette up and down to open the zona. The opening should be about 1/2 - 2/3 size of a blastomere cell from 8-Cell stage (OD 30 μ m)*.
- 05** When the outer layer of the zona pellucida is dissolved and reached the inner layer, stop applying the Acidified Tyrode's and set the tip of the micropipette to the surface of the membrane. Then aspirate the membrane (Fig. 2) to open the inner layer (Fig.3).

*Try to blow out equal volume of the Acidified Tyrode's and not have excess volume in one point.



RELATED PRODUCTS

- ICSI Holding Pipettes (REF.71100)
- Zona Drilling (REF.71200)