

Micro Manipulation

Pentoxifylline

- For activation of immotile sperm
- For identifying motile sperm, for ICSI for treatment with patients with azoospermia



REF	Code	Contents
94215	PF-05×5	0.5mL×5

COMPONENTS

Calcium Chloride / Gentamicin / Glucose / HEPES / Magnesium Sulfate / Pentoxifylline / Potassium Chloride / Potassium Phosphate / Sodium Bicarbonate / Sodium Chloride / Sodium Lactate / Sodium Pyruvate

QUALITY CONTROL

pH 7.2-7.6 / Osmolarity 270-295mOsm/L / Endotoxin <0.25EU/mL / Sterility Test / Sperm Survival (24h) ≥75% / Sperm Penetration Assay ≥3

Storage: 2-8°C / Shelf Life: 6 months



www.kitazato.co.jp

Manufactured by:
Kitazato Corporation
 100-10 Yanagishima, Fuji, Shizuoka 416-0932 JAPAN

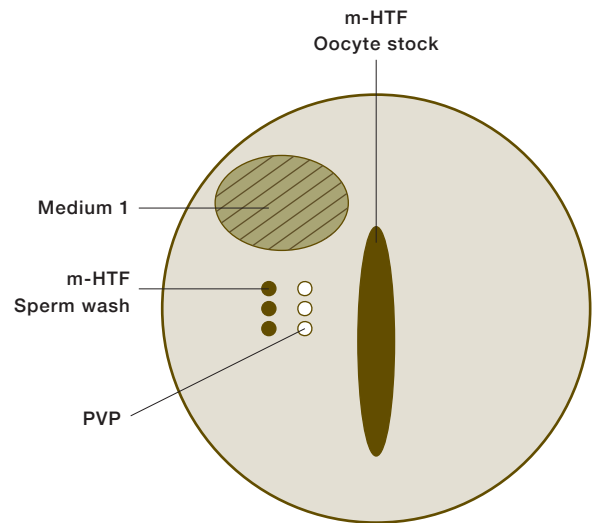
Mail contact@kitazato.co.jp

- Specification may change without pre-notice for purpose of product improvement.
- Kitazato Logo is trade mark of KITAZATO.

Pentoxifylline Instruction for use

ICSI

- 1 Allow Pentoxifylline to reach ambient temperature in a tube.
- 2 Add equal amount of sperm to the Pentoxifylline.
(This is Medium 1).
- 3 Make a drop of Medium 1 and m-HTF in an ICSI dish.
- 4 After leaving the ICSI dish for 30 minutes in 37°C, pick up the motile sperm from Medium 1.
- 5 Wash the selected sperm in the m-HTF drop, and then move on to ICSI procedure.



IVF

- 1 Allow Pentoxifylline to reach ambient temperature.
Add equal amount of pre-washed sperm and equilibrate for 30 minutes in 37°C.
- 2 After equilibration, gently add 10mL of SepaSperm Wash Solution (REF 92131).
- 3 After centrifuging for 5 minutes at 200xg, pick up the sperm pellet and move on to IVF procedure.